

Surge protection device - DT-UFB-IB-RBI - 2800055

Please be informed that the data shown in this PDF Document is generated from our Online Catalog. Please find the complete data in the user's documentation. Our General Terms of Use for Downloads are valid (<http://phoenixcontact.com/download>)

Attachment plug with surge protection for 5-conductor remote bus input. Connection: 9-pos. D-SUB plug - socket. Can alternatively be snapped onto DIN rails. Incl. 1 m cable with 9-pos. D-SUB connection.




Why buy this product

- 9-pos. D-SUB connection
- Adapter type
- DIN rail mounting possible by removing the cap
- D-SUB cable included
- For remote bus modules (remote bus IN - RBI)



Key Commercial Data

Packing unit	1 STK
GTIN	 4 046356 462716
GTIN	4046356462716

Technical data

Dimensions

Height	110 mm
Width	25 mm
Depth	63 mm

Ambient conditions

Ambient temperature (operation)	-40 °C ... 85 °C
Degree of protection	IP20

General

Housing material	Zinc die-cast
Color	silver/black
Standards for clearances and creepage distances	IEC 60664-1
	VDE 0110-1

Surge protection device - DT-UFB-IB-RBI - 2800055

Technical data

General

Mounting type	Connection-specific attachment plug and DIN rail, 35 mm
Design	Attachment plug for DIN rail mounting
Number of positions	5
Direction of action	Line-Line & Line-Ground/Shield

Protective circuit

IEC test classification	B2
	C1
	C2
	C3
	D1
VDE requirement class	B2
	C1
	C2
	C3
	D1
Maximum continuous voltage U_c	5.8 V DC
Rated current	≤ 180 mA (25 °C)
Operating effective current I_c at U_c	≤ 1 μ A
Residual current I_{PE}	≤ 5 μ A
Nominal discharge current I_n (8/20) μ s (Core-Core)	≤ 5 kA
Nominal discharge current I_n (8/20) μ s (core-earth)	≤ 5 kA
Total discharge current I_{total} (8/20) μ s	10 kA
Output voltage limitation at 1 kV/ μ s (core-earth) spike	≤ 700 V
Output voltage limitation at 1 kV/ μ s (core-core) static	≤ 15 V
Output voltage limitation at 1 kV/ μ s (core-earth) static	≤ 700 V
Output voltage limitation at 1 kV/ μ s (core-GND) static	≤ 15 V
Residual voltage at I_n (conductor-conductor)	≤ 25 V
Residual voltage at I_n (conductor-ground)	≤ 55 V
Residual voltage at I_n (conductor-GND)	≤ 25 V
Voltage protection level U_p (core-core)	≤ 16 V (B2 - 100 A)
	≤ 20 V (C1 - 500 A)
	≤ 20 V (C2 - 1 kA)
	≤ 60 V (C2 - 5 kA)
Voltage protection level U_p (core-ground)	≤ 700 V (B2 - 100 A)
	≤ 700 V (C1 - 500 A)
	≤ 700 V (C2 - 5 kA)
Response time t_A (core-core)	≤ 1 ns
Response time t_A (core-earth)	≤ 100 ns
Input attenuation a_E , sym.	typ. 0.5 dB (≤ 5 MHz / 150 Ω)
	typ. 0.6 dB (≤ 10 MHz / 100/150 Ω)

Surge protection device - DT-UFB-IB-RBI - 2800055

Technical data

Protective circuit

Cut-off frequency fg (3 dB), sym. in 100 Ohm system	≥ 100 MHz
Cut-off frequency fg (3 dB), sym. in 150 Ohm system	≥ 100 MHz
Capacity (core-core)	typ. 20 pF
Resistance in series	typ. 7 Ω
Surge protection fault message	None
Impulse durability (conductor-conductor)	C1 - 1 kV/500 A
	C2 - 10 kV/5 kA
Impulse durability (conductor-ground)	B2 - 4 kV/100 A
	B2 - 4 kV/100 A
	C1 - 1 kV/500 A
	C2 - 10 kV/5 kA
	D1 - 1 kA

Connection data

Connection method	D-SUB-9
Connection method IN	D-SUB-9 plug
Connection method OUT	D-SUB-9 socket
Connection technology	Remote bus input

Connection, equipotential bonding

Connection method	Cable connection
-------------------	------------------

Standards and Regulations

Standards/regulations	IEC 61643-21
	DIN EN 61643-21
Standards/specifications	DIN EN 61643-21 2002
	IEC 61643-21 2000

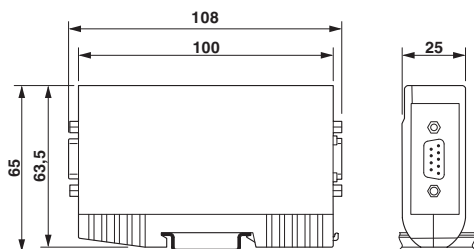
Environmental Product Compliance

China RoHS	Environmentally friendly use period: unlimited = EFUP-e
	No hazardous substances above threshold values

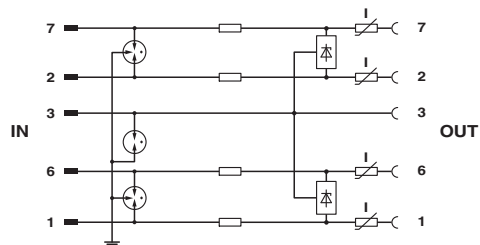
Drawings

Surge protection device - DT-UFB-IB-RBI - 2800055

Dimensional drawing



Circuit diagram



Approvals

Approvals

Approvals

EAC

Ex Approvals

Approval details

EAC		RU C- DE.A*30.B01561
-----	--	-------------------------

Phoenix Contact 2017 © - all rights reserved
<http://www.phoenixcontact.com>

PHOENIX CONTACT GmbH & Co. KG
Flachsmarktstr. 8
32825 Blomberg
Germany
Tel. +49 5235 300
Fax +49 5235 3 41200
<http://www.phoenixcontact.com>