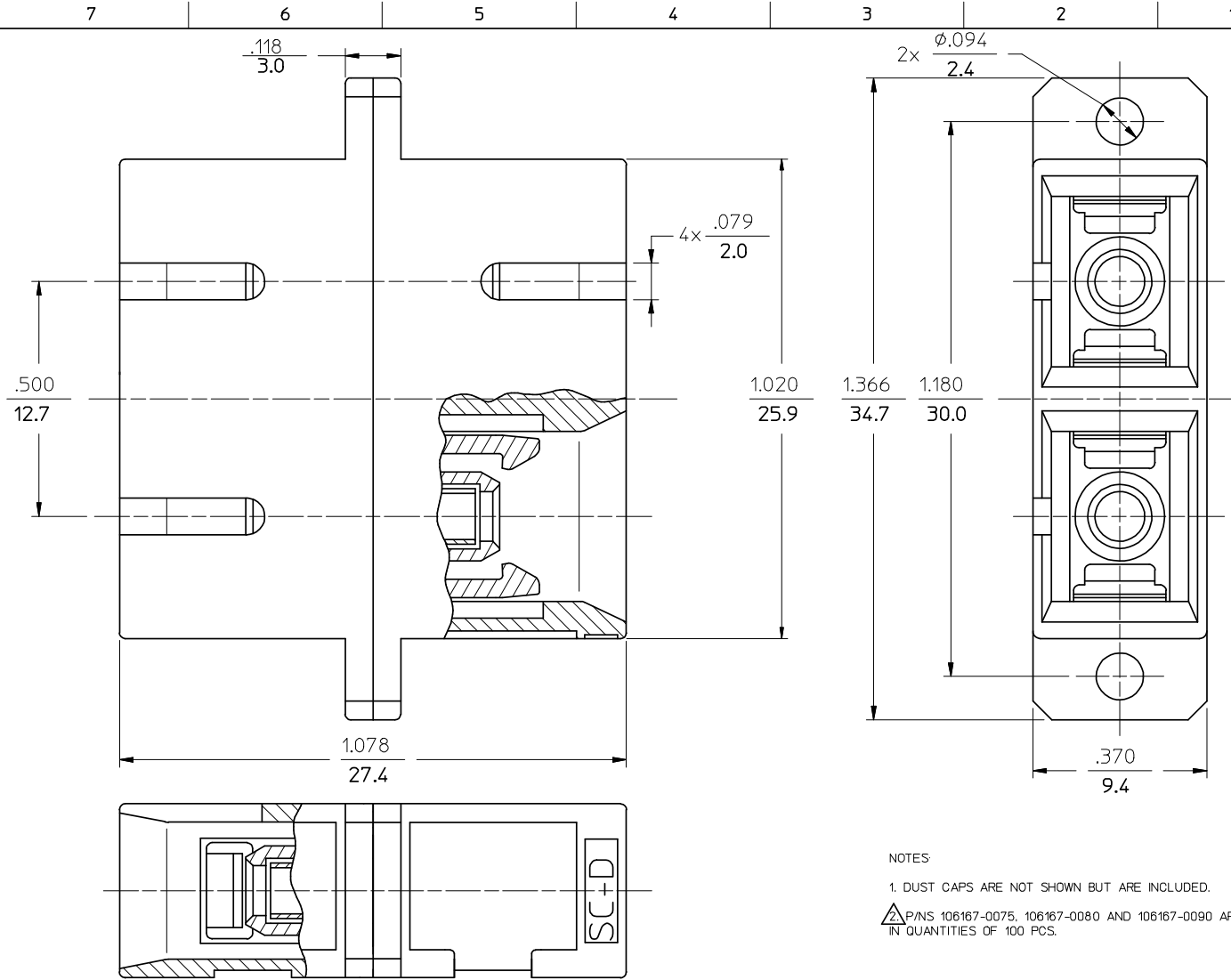
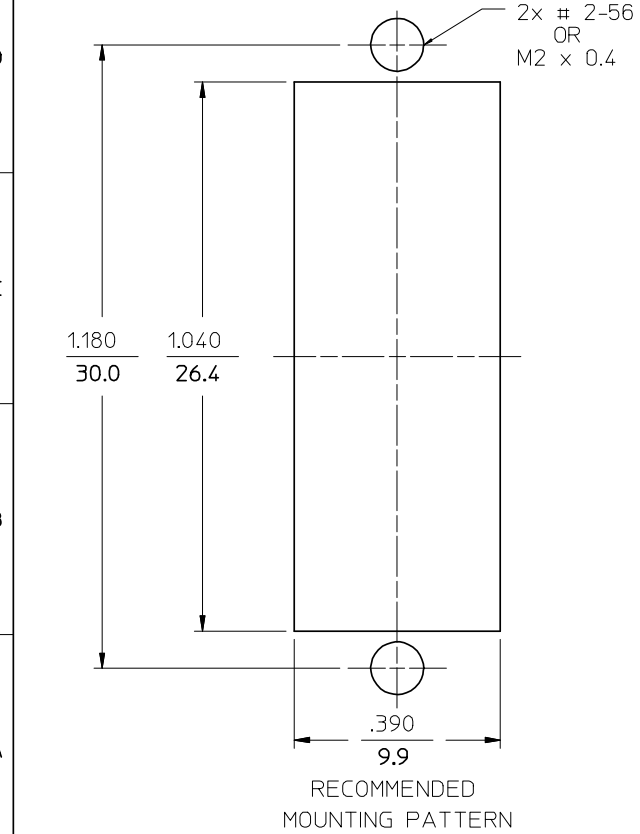


P/N OF ADAPTER	MATERIAL OF SLEEVE	TYPE	COLOR
106166-0000	ZR	SINGLE MODE	BLUE
106167-0000	PHOSPHOR BRONZE		
106167-0090	PHOSPHOR BRONZE		
106166-0010	ZR	MULTIMODE	BEIGE
106167-0010	PHOSPHOR BRONZE		BLACK
106166-0030	ZR		
106167-0030	PHOSPHOR BRONZE	SINGLE MODE	RED
106166-0040	ZR		APC
106167-0040	PHOSPHOR BRONZE	MULTIMODE	
106166-0050	ZR		BEIGE
106167-0050	PHOSPHOR BRONZE		
106167-0070	PHOSPHOR BRONZE	MULTIMODE	AQUA
106167-0075			BEIGE
106167-0080			BEIGE



NOTES
 1. DUST CAPS ARE NOT SHOWN BUT ARE INCLUDED.
 2. P/N'S 106167-0075, 106167-0080 AND 106167-0090 ARE BULK PACKED IN QUANTITIES OF 100 PCS.

ENTER DESCRIPTION EC NO: MF2008-0519 DRWN: KPEVZNER CHKD: 2008/05/22 APPR: LGUMIN 2008/05/27	QUALITY SYMBOLS	GENERAL TOLERANCES (UNLESS SPECIFIED)	DIMENSION STYLE	SCALE	DESIGN UNITS	THIRD ANGLE PROJECTION
	▽=0 ▽=0	4 PLACES ±--- ±--- 3 PLACES ±--- ±--- 2 PLACES ±--- ±--- 1 PLACE ±--- ±--- ANGULAR ±1/2°	IN/MM	4:1	INCH	
		DRAFT WHERE APPLICABLE MUST REMAIN WITHIN DIMENSIONS	DRAWN BY: RPACIFICI DATE: 2006/01/24 CHECKED BY: _____ DATE: _____ APPROVED BY: _____ DATE: _____	TITLE	DUPLEX ADAPTER (SC-D)	
			MATERIAL NO. SEE TABLE	DOCUMENT NO. SD-10616X-00X0	MOLEX INCORPORATED	
			SIZE B	THIS DRAWING CONTAINS INFORMATION THAT IS PROPRIETARY TO MOLEX INCORPORATED AND SHOULD NOT BE USED WITHOUT WRITTEN PERMISSION		SHEET NO. 1 OF 1