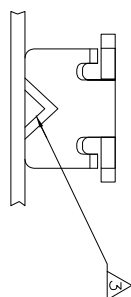
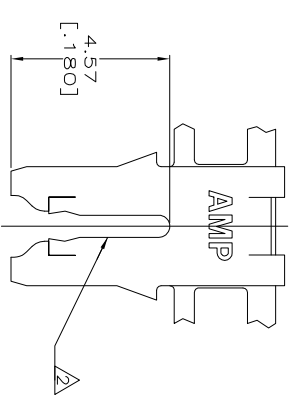
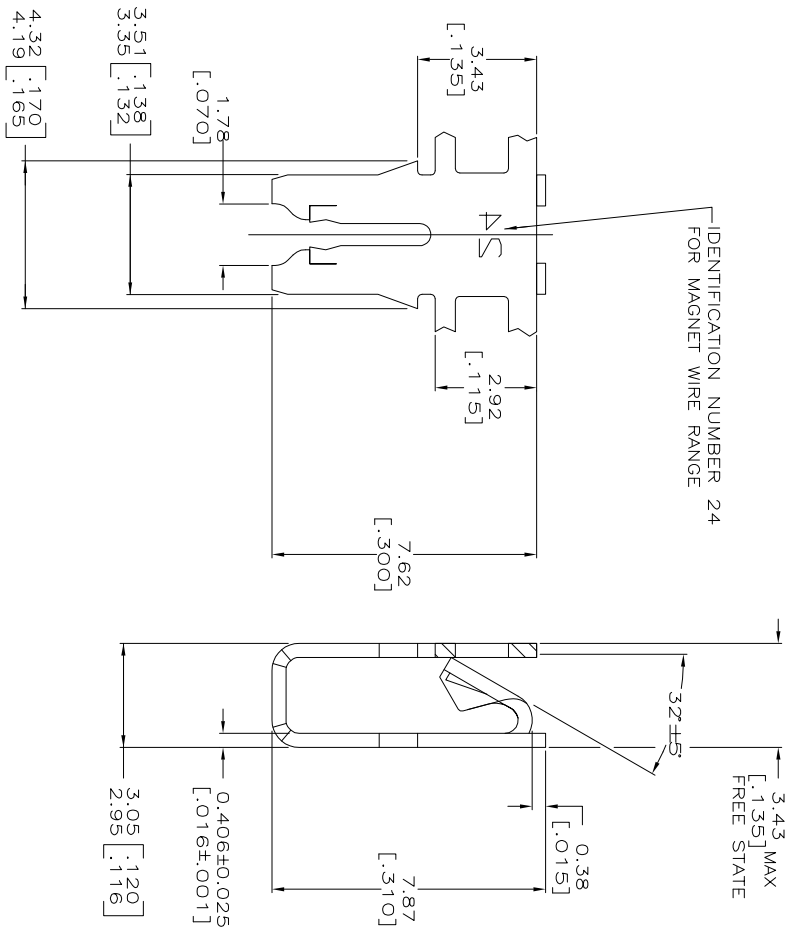


REV	DESCRIPTION	DATE	BY	CHK
S1	REVISED PER ECR-06-011785	18MAY06	MF	KR
S2	REVISED PER ECR-12-022060	28DEC12	CX	LL



IDENTIFICATION FOR MAGNET WIRE RANGE 24



- CONTINUOUS STRIP ON REELS WITH TERMINALS LOCATED ON 5.59±0.08 [0.220±0.003] CENTERS.
- SLOT ACCEPTS 0.80-1.20mm [#20-#16.5] AWG COPPER MAGNET WIRE. A SINGLE WIRE ONLY.
- POKE-IN ACCEPTS A 0.50-0.90mm<sup>2</sup> [#20-#18] AWG SOLID OR FUSED STRANDED LEAD WIRE.
- 0.002032 [0.000080] MIN TIN PLATE.

DESCRIPTION	REVISION	DATE	BY	CHK
H04 PHOSPHOR BRONZE	STANDARD	62833-4		
<del>H04 PHOSPHOR BRONZE</del>	<del>REVERSED</del>	<del>62833-3</del>		
<del>4M BRASS</del>	<del>REVERSED</del>	<del>62833-2</del>		
4M BRASS	STANDARD	62833-1		

THIS DRAWING IS A CONTROLLED DOCUMENT

DESIGNED BY: MS FEHER  
 DRAWN BY: GSSBY4  
 CHECKED BY: [Signature]  
 DATE: 11-4-2012

TERMINAL, POKE-IN, 300 SERIES MAG-MATE

APPROVED BY: [Signature]  
 DATE: 11-4-2012

SIZE: A2  
 DATE CODE: 00779  
 DRAWING NO: 62833

CUSTOMER DRAWING

SCALE: 10:1

SHEET 1 OF 1

REV S2