

# 124B

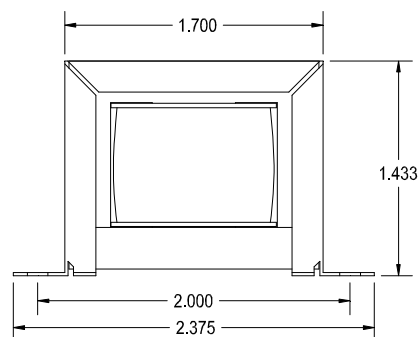
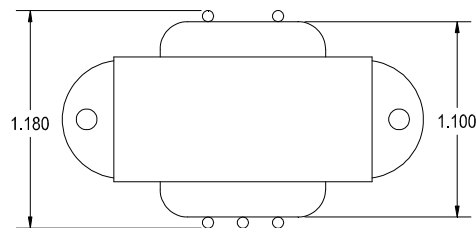
## TUBE DRIVER - INTERSTAGE TRANSFORMER

The minimum frequency range this transformer operates in is 150 Hz to 15 KHz.

Designed for general purpose or replacement use in single ended or phase inverter tube driver circuits


Open style, 2 point mount with minimum 5" long leads

Core material 49% Nickel Steel laminations for better low end response.



### ELECTRICAL SPECIFICATIONS

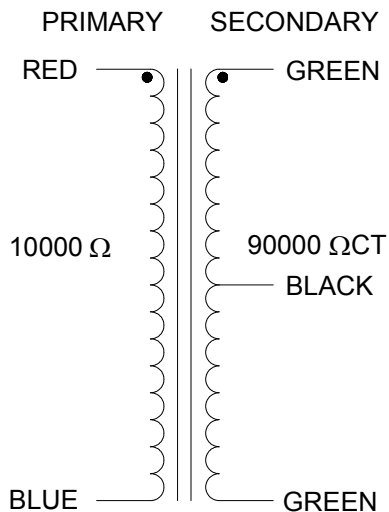
Characteristic	Typical
Input Impedance	10,000 Ω
Output Impedance	90,000 ΩCT
Output Power	5.0 Watts
DCR	
Primary	405 Ω
Secondary	1525 Ω
Inductance @ 1.0 kHz, 1.0 V OC	
Primary	28 H
Secondary	108 H
Leakage Inductance	0.11 H
Impedance @ 1.0 kHz, 1.0 V OC	
Primary	175 kΩ
Secondary	675 kΩ
Frequency Response	±1db from 150Hz to 15KHz
Turns ratio	1:3
Dielectric Strength	500 Vrms



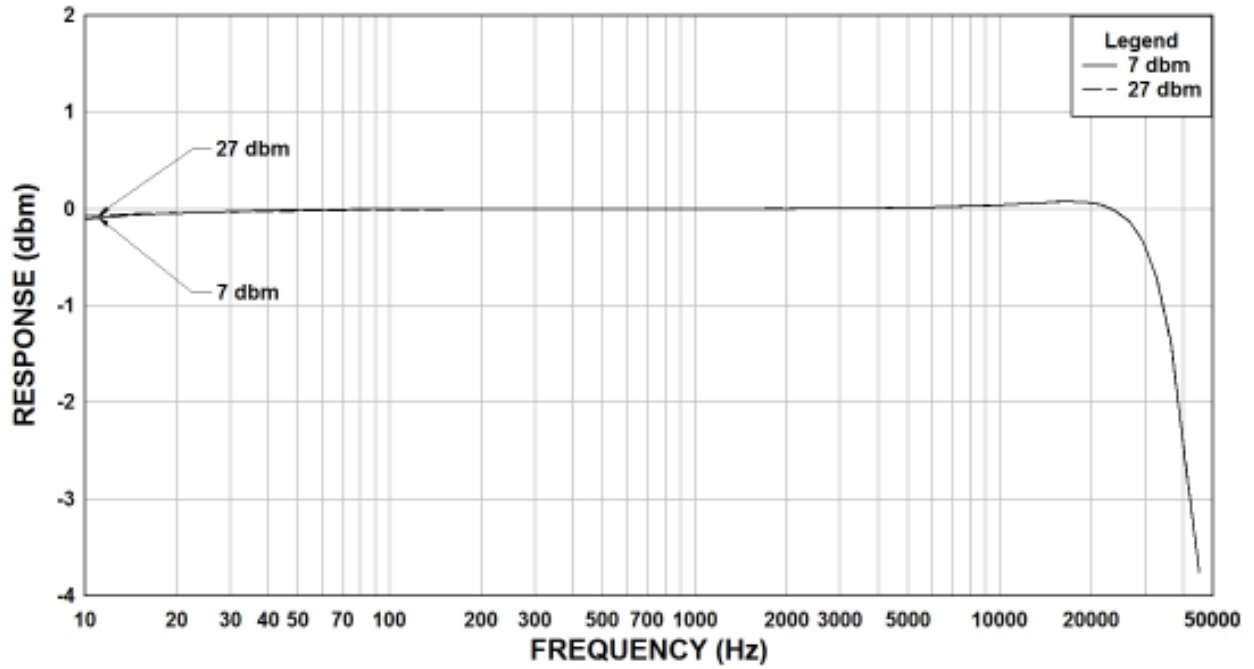
124B

5W 150Hz - 15kHz  
 RED - BLU: 10000Ω  
 GRN - BLK - GRN: 90000ΩCT  
 MADE IN CANADA

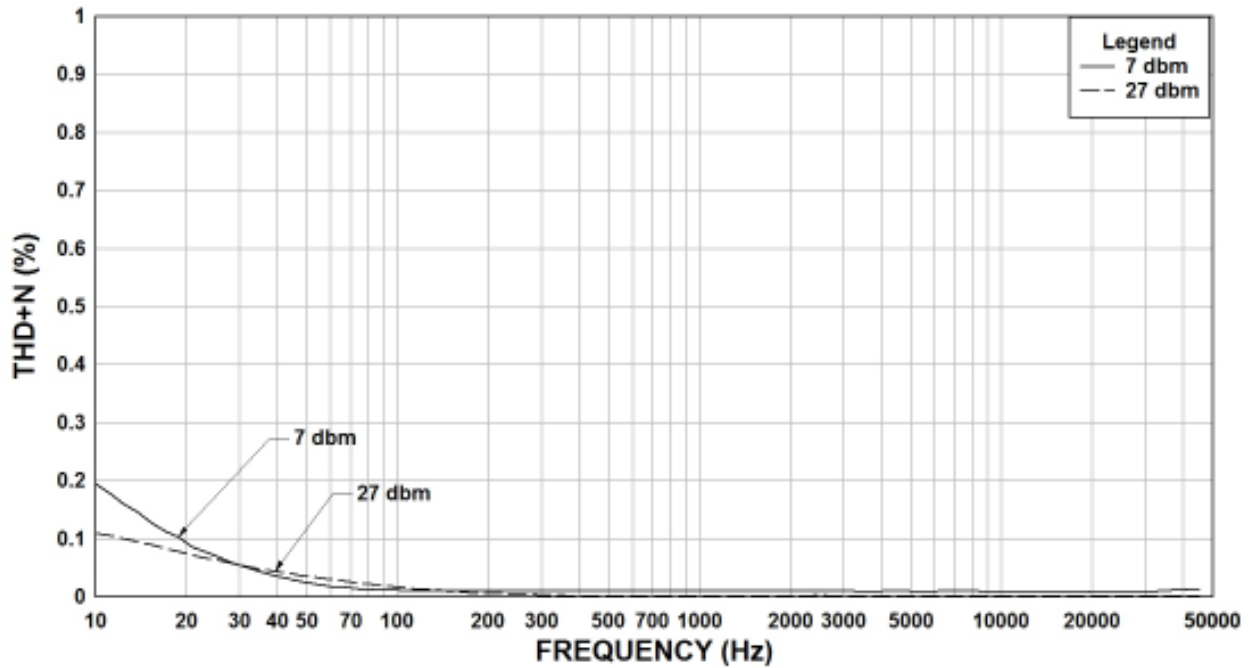
### SCHEMATIC DIAGRAM



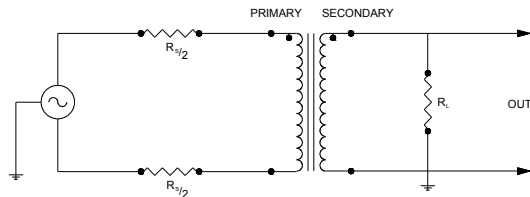
### 124B Rs=10K, RI=90K Frequency Response



### 124B Rs=10K, RI=90K THD+N



#### TYPICAL TEST CIRCUIT



Measurement instruments  
 Hp4192a impedance analyzer  
 Hp3456a DVM  
 Keithley 2002 DVM  
 D scope series iii audio analyzer

This drawing and the information in it is the property of Hammond Manufacturing. It may not be reproduced, transmitted or used in any manner whatsoever without the written permission of Hammond Manufacturing. Data subject to change without notice.