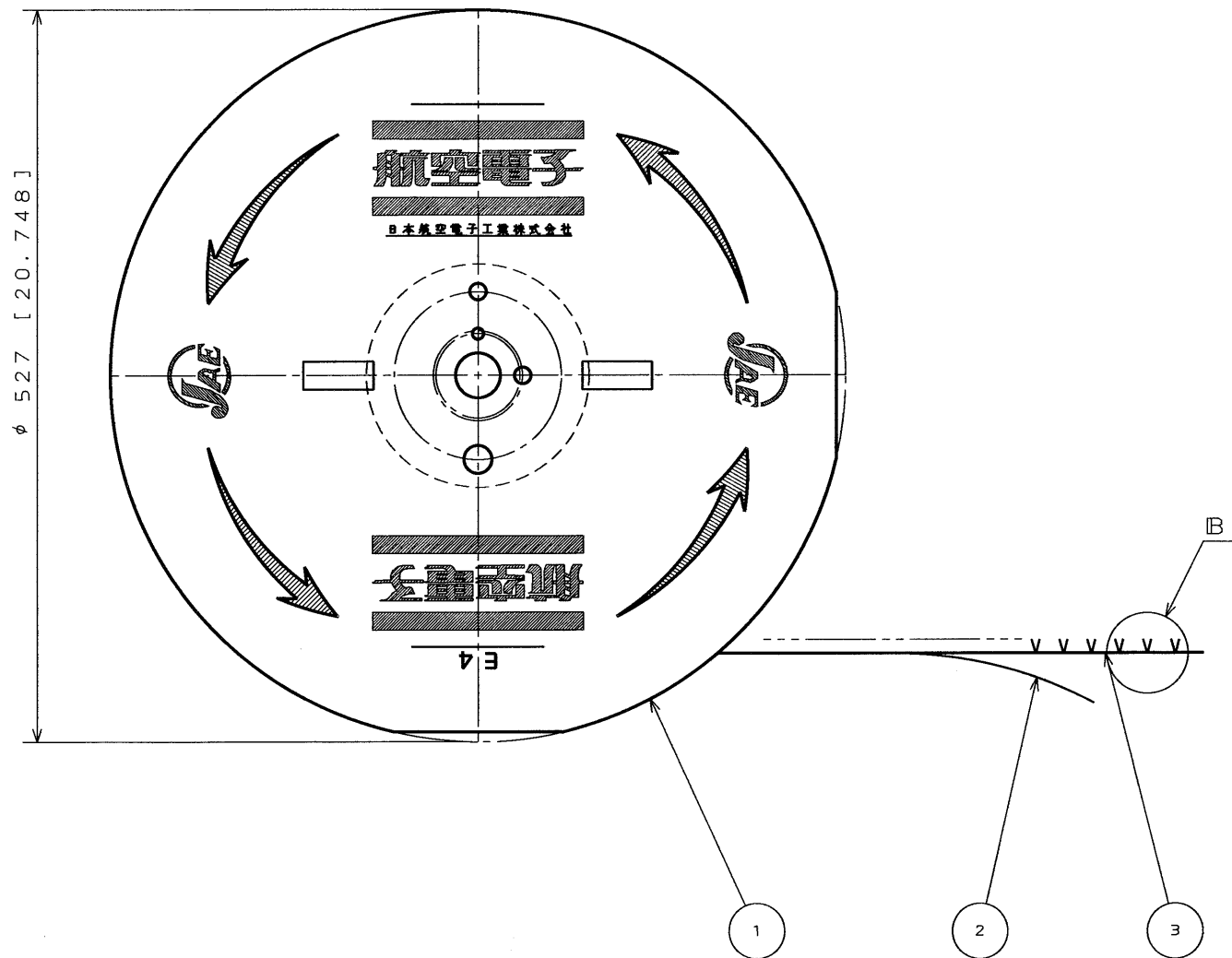
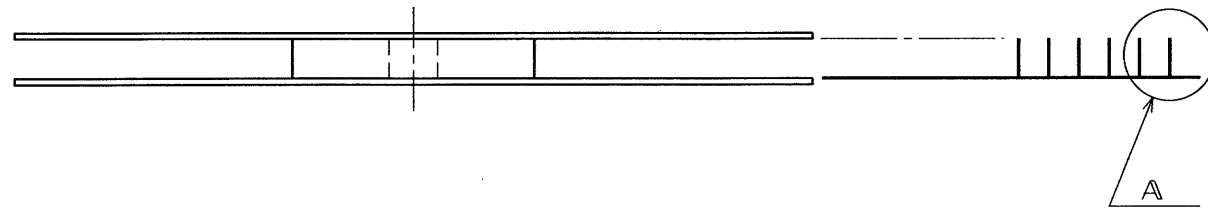


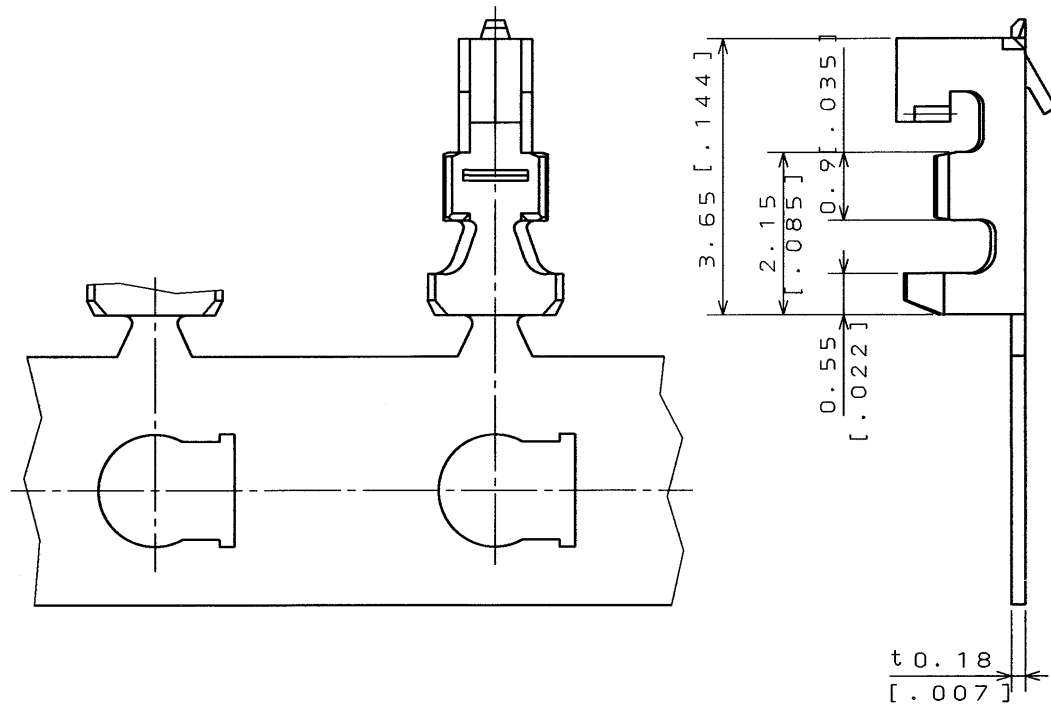
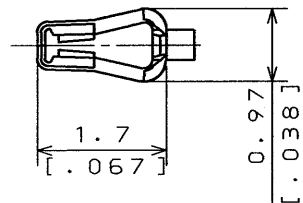
S J 0 2 3 0 3 5 - E

DWG. NO.

SYM.	DCN NO.	DESCRIPTION	DATE	DRAWN	CHECKED	APP'D	APP'D
2	29097	REMOVE NOTE 4	31. Jul '91	J. HAYAKAWA (G. KITADA)	M. SUZUKI	<i>H. Fujino</i>	<i>H. Fujino</i>



EXCLUDING CRIMP PORTION



DETAIL A  
(SCALE 10/1)

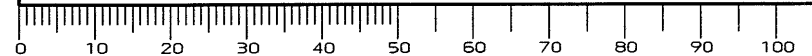
- NOTE 1. APPLICABLE WIRE: AWG#28~#32 (STRANDED)  
 INSULATION OUTER DIA.: 0.5~1.0 [0.020]~[0.039]  
 2. NO PLATING THE SEARING AREAS.  
 3. APPLICABLE CRIMPING MACHINS FOR THIS MAGAZINE ASS'Y IS CT350-2-ILZ

DIMENSIONS ARE IN MILLIMETERS  
 TOLERANCES ON: (INCHES)

DIMENSION	ANGLES	CONCENTRICITY
. ±0.31.012	X° ±	WITHIN T.I.R.
.X ±0.21.009	X°X ±	
.XX ±0.11.004		
.XXX ±		

3	SOCKET CONTACT	15000	PHOSPHOR BRONZE	TIN PLATING	
2	TAPE	1	PAPER		
1	MAGAZINE	1	PAPER		
ITEM	DESCRIPTION	Q'TY	MATERIAL	FINISH	REMARKS
REFERENCE DOCUMENT		DATE	SCALE		
		B. SEP. '89	JAE-CONNECTOR.COM		
MATERIAL		DRAWN	TITLE		
		J. HAYAKAWA	IL-Z-C3-A-15000		
TREATMENT		CHECKED	Reference Only		
		M. SUZUKI	(MAGAZINE ASSEMBLY)		
FINISH		APP'D	SERIES		
		T. MIYASHITA	IL-Z		
		APP'D	MUSASHINO, AKISHIMA-SHI TOKYO, JAPAN		
		H. FUJINO	DWG. NO.		
			S J 0 2 3 0 3 5 - E		

DCF-116A



SIZE A3