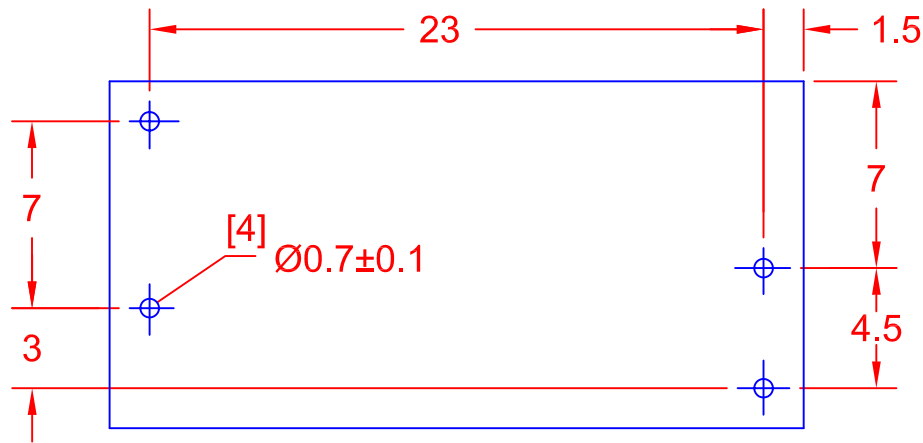
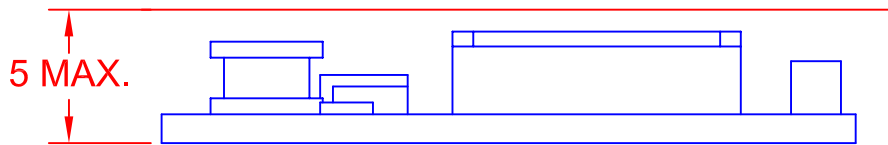
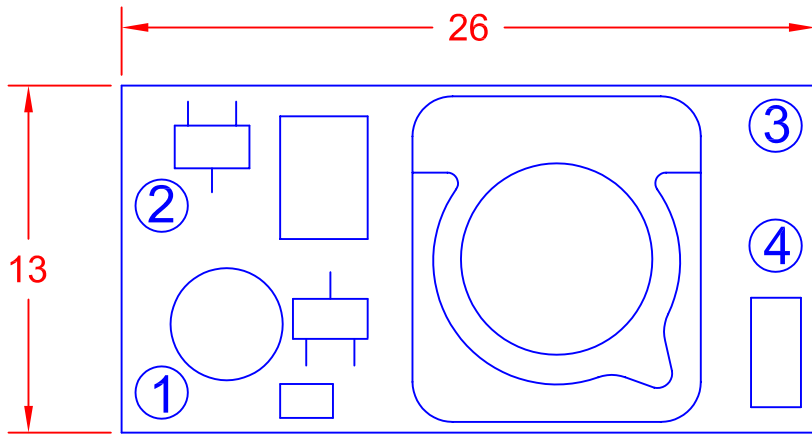


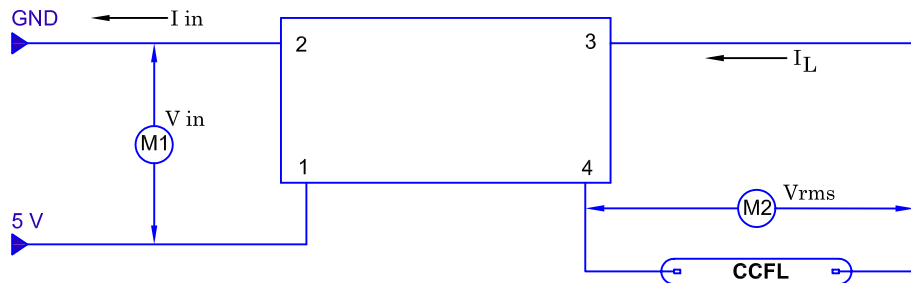
REV.	DESCRIPTION/ECO NO.	DATE
	RELEASED	8/19/97
A	WIRE DIAGRAM CHNGS	10/31/00
B	CONVERT TO CAD	6/6/01
C	ADD HOLE DIA.	3/15/02



CHARACTERISTICS	MIN	TYP	MAX
INPUT VOLTAGE: (vdc)	4.5	5.0	5.5
INPUT CURRENT: (mA)	200	250	300
OUTPUT VOLTAGE: (Vrms)	600	650	700
OUTPUT CURRENT (maRms)	4.0	4.5	5.0
OUTPUT FREQUENCY: (kHz)	70	80	90
OPERATING TEMP: (CELSIUS)	0	25	50

BOARD PIN #	INPUT
1	+V (V in)
2	V (GND)
3	OUT GND
4	V OUT

TOLERANCE	
L < 20	±0.2
20 ≤ L < 50	±0.3
50 ≤ L < 100	±0.4
100 ≤ L	±0.5



<b>METRIC</b>  THIRD ANGLE PROJECTION	DIMENSIONS ARE IN MILLIMETERS TOLERANCE UNLESS OTHERWISE SPECIFIED 1 PL +/- 0.2 2 PL +/- ANGLE +/- 0	<b>JKL COMPONENTS CORPORATION</b>			
	TITLE <b>5 V CCFL POWER SUPPLY</b>				
DRAWN BY L. WENGSTROM	APPV'D BY F.D.	DATE 3/15/02	SIZE <b>A</b>	FSCM NO. <b>55335</b>	DRAWING NO. <b>BXA-502</b>
- CAD DRAWING - MANUAL REVISIONS NOT PERMITTED			SCALE NONE	RELEASED DATE 8/19/97	REVISION DATE 3/15/02
				REV. NO. <b>C</b>	SHEET OF